



THE RAIL

RESIDENCES

A BIRKIRKARA PROJECT BY ACMUS

An exquisite fusion of contemporary elegance and convenience, gracefully situated in the heart of Birkirkara's Old Church Area, designed for a modern lifestyle.



ACMUS

Project Overview.



WELCOME TO THE RAIL.

Welcome to The Rail, nestled in the historic embrace of Birkirkara's Old Church Area, where contemporary elegance meets heritage. Offering meticulously designed 1, 2, and 3 bedroom apartments, The Rail embodies ACMUS's dedication to exquisite living.

Beyond being a residence, it's a lifestyle choice that harmonizes comfort and sophistication within this vibrant historical district. Seamlessly blending architectural finesse with a central location, it's an ideal opportunity for families, discerning retirees, and savvy investors seeking a refined yet connected way of life amidst Birkirkara's rich cultural tapestry.



THE RAIL
RESIDENCES



PROJECT HIGHLIGHTS.

01 Varied Spaces

Discover diverse layouts and styles crafted for individual preferences at The Rail. With 1, 2, and 3 bedroom apartments meticulously designed, each residence offers a unique living experience tailored to your needs.

03 Detailed Elegance

Experience sophistication in your home with top-tier finishes at The Rail. From design to functionality, our residences meet the highest standards, guaranteeing durability and refined living.

05 Convenient

Indulge in the convenience of easy access to daily essentials. Shopping, dining, and recreational facilities are within a leisurely stroll from your doorstep at The Rail.

Centrally Located

Nestled in the heart of Birkirkara's Old Church Area, The Rail offers a historic backdrop coupled with easy access to local attractions and amenities, ensuring a picturesque lifestyle.

04 Community Centric

Tailored for families, The Rail fosters a secure and inviting community environment, providing the perfect setting to forge cherished memories together.

06 Urban Haven

Find tranquility within the bustling heart of Birkirkara. The Rail serves as an urban oasis, providing residents a peaceful haven amidst the town's lively atmosphere.





Explore The Rail.



EXTERIOR ELEGANCE.

The Rail's exterior boasts a sleek and modern design, distinguished by clean lines and spacious balconies that enhance its contemporary allure. Embracing a clean aesthetic, its facade radiates a modern elegance that stands out within Birkirkara's Old Church Area. The generously sized balconies, a prominent feature, offer residents ample space and natural light, creating a private outdoor haven.

Reflecting a modern architectural vision, The Rail's exterior presents a crisp and stylish appearance, ensuring a harmonious blend of modernity and comfort for its residents.



THE RAIL
LUXURY APARTMENTS



ACMUS



THE RAIL
RESIDENCES



ACMUS



THE RAIL
RESIDENCES

INDOOR EXCELLENCE.

01 Expansive Spaces

At The Rail, revel in the openness of spacious rooms that invite abundant natural light, fostering an atmosphere of comfort and versatility. Thoughtfully crafted layouts create an expansive environment ideal for both relaxation and entertainment.

02 Luxurious Bathrooms

Indulge in The Rail's bathrooms, designed as a haven for relaxation. Featuring sleek fixtures, modern amenities, and a contemporary aesthetic, they offer a sanctuary for rejuvenation amid the hustle and bustle of daily life.

03 Elegant Finishings

Every space at The Rail is adorned with premium tiles that epitomize durability and refinement. These high-quality finishes not only exude luxury but also add a sophisticated touch to the modern interiors, elevating the overall ambiance of each residence.













Floor plans.



THE MAISONNETTES.

AM1 / 3 Bedroom / €368,000

130.45m² Internal / 33.91m² External

AM2 / 3 Bedroom / €368,000

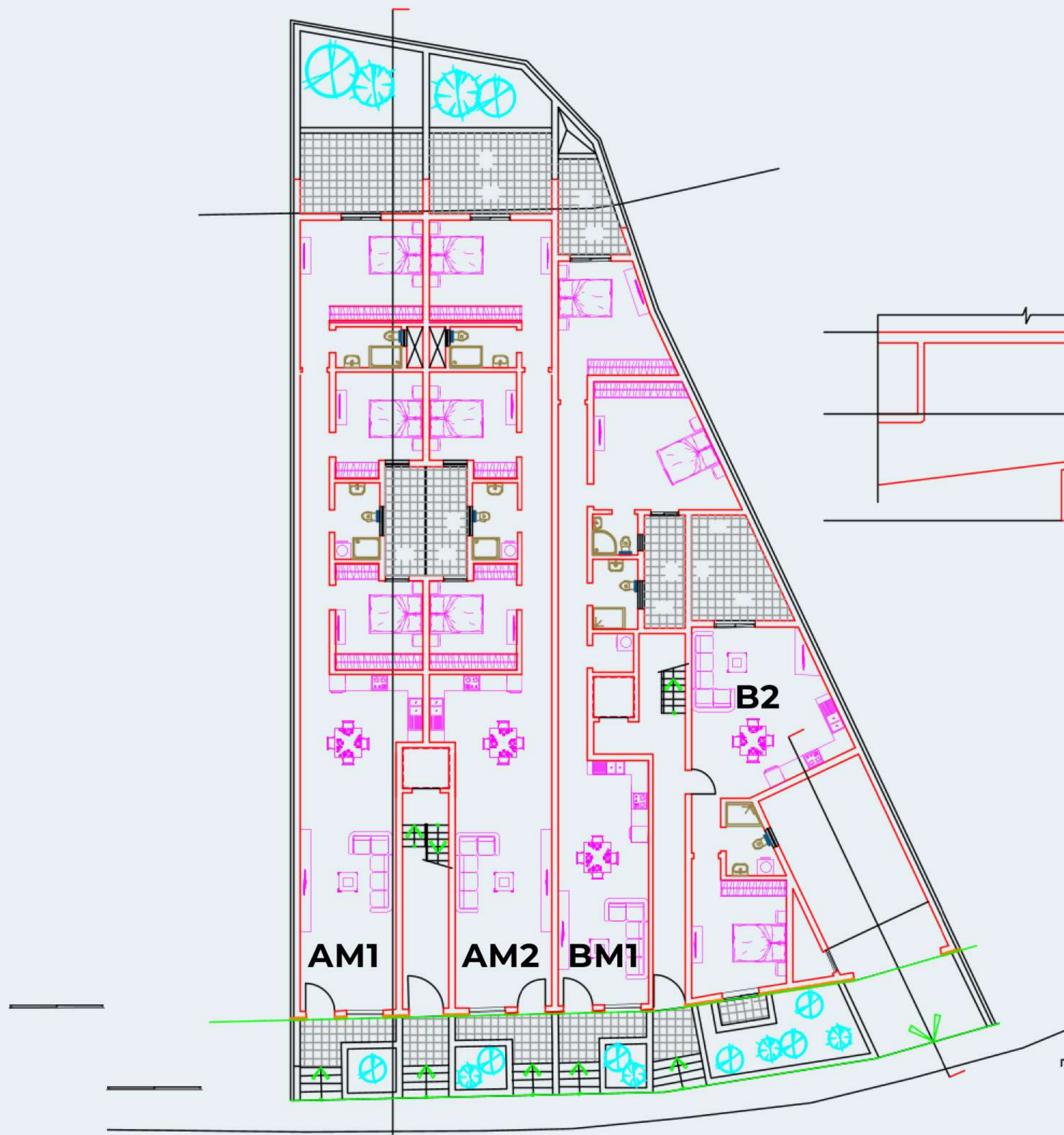
126.53m² Internal / 33.26m² External

BM1 / 2 Bedroom / €295,000

106.87m² Internal / 26.77m² External

B2 / 1 Bedroom / €218,000

61.15m² Internal / 15.59m² External





FIRST FLOOR APARTMENTS.

A3 / 3 Bedroom / €340,000

129.96m² Internal / 16.36m² External

A4 / 2 Bedroom / €340,000

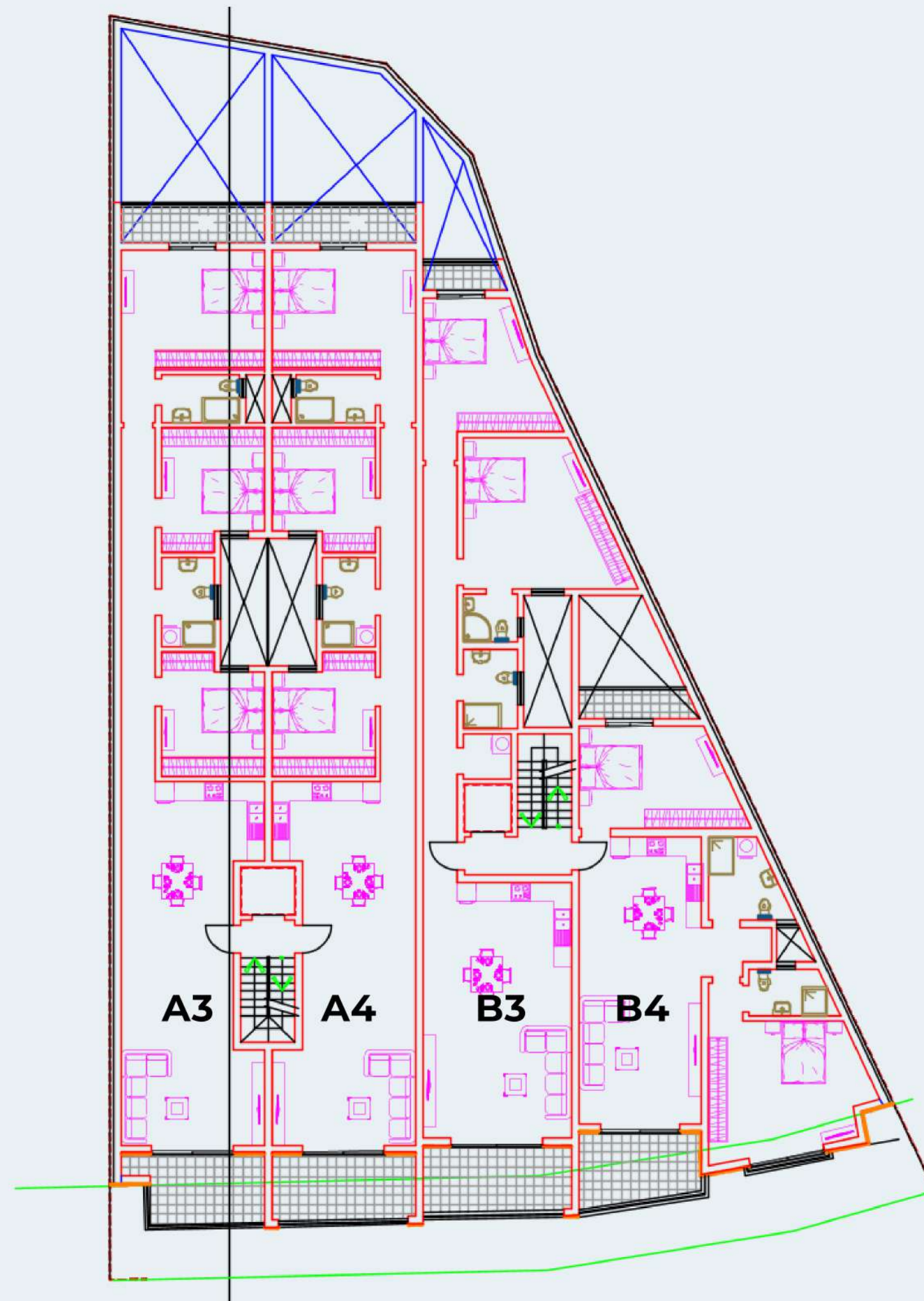
126.62m² Internal / 16.99m² External

B3 / 2 Bedroom / €285,000

115.19m² Internal / 13.71m² External

B4 / 2 Bedroom / €275,000

99.32m² Internal / 13.14m² External





SECOND FLOOR APARTMENTS.

A5 / 3 Bedroom / €350,000

129.96m² Internal / 16.36m² External

A6 / 3 Bedroom / €350,000

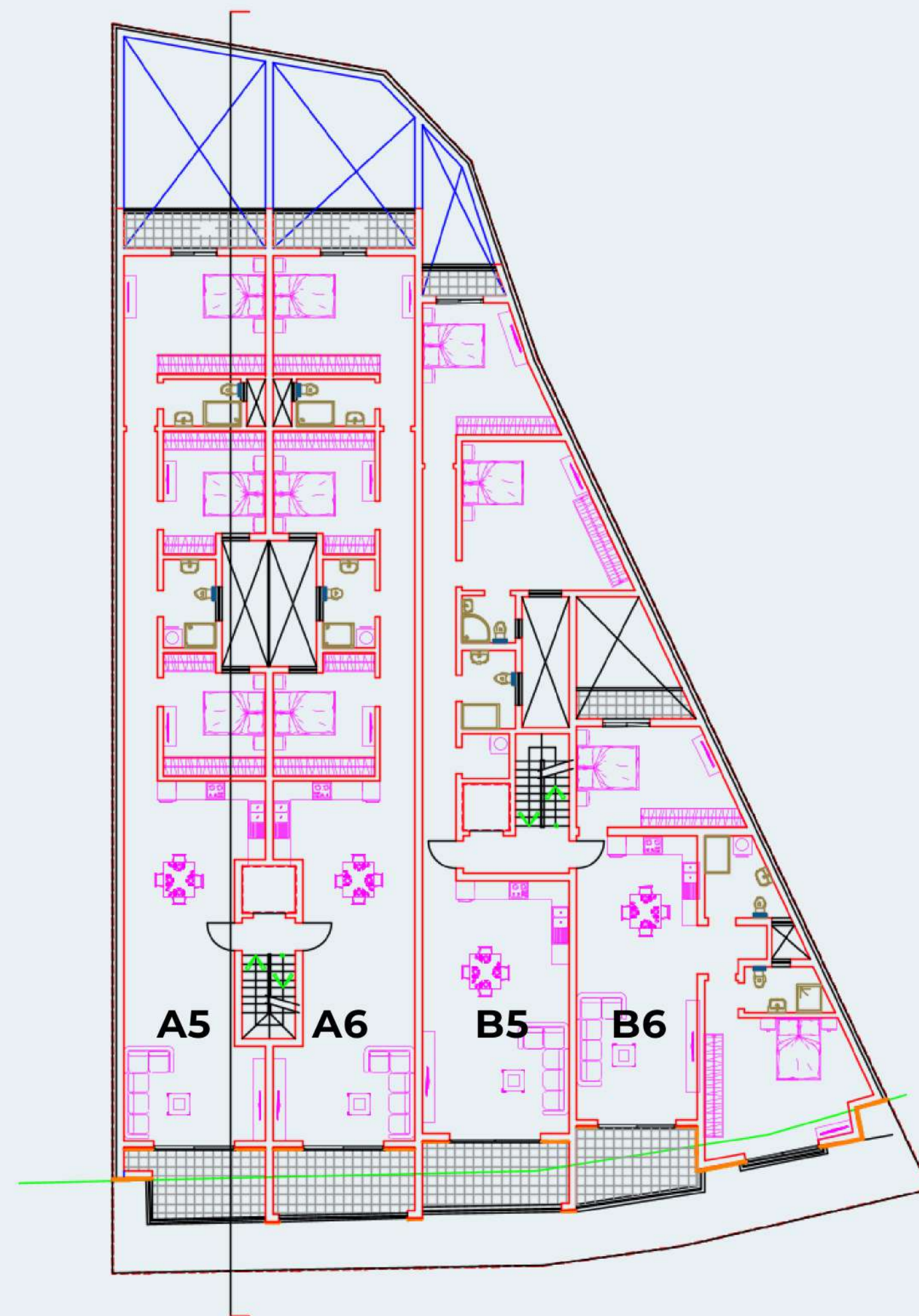
126.62m² Internal / 16.99m² External

B5 / 2 Bedroom / €295,000

115.19m² Internal / 13.71m² External

B6 / 3 Bedroom / €285,000

99.32m² Internal / 13.14m² External





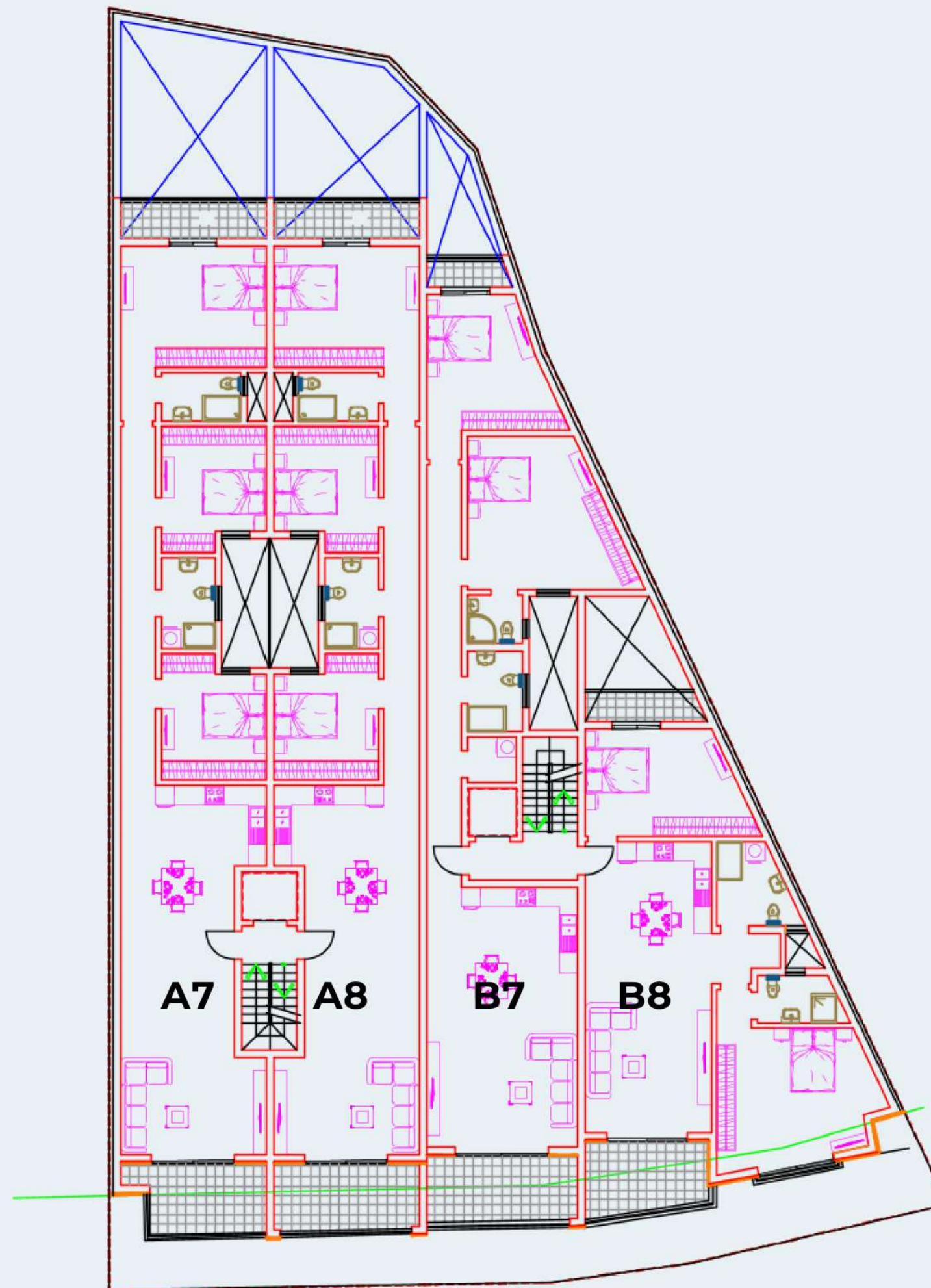
THIRD FLOOR APARTMENTS.

A7 / 3 Bedroom / €360,000
129.96m² Internal / 16.36m² External

A8 / 3 Bedroom / €360,000
126.62m² Internal / 16.99m² External

B7 / 2 Bedroom / €305,000
115.19m² Internal / 13.71m² External

B8 / 2 Bedroom / €295,000
99.32m² Internal / 13.14m² External





THE PENTHOUSES.

PH A9 / 3 Bedroom / €425,000

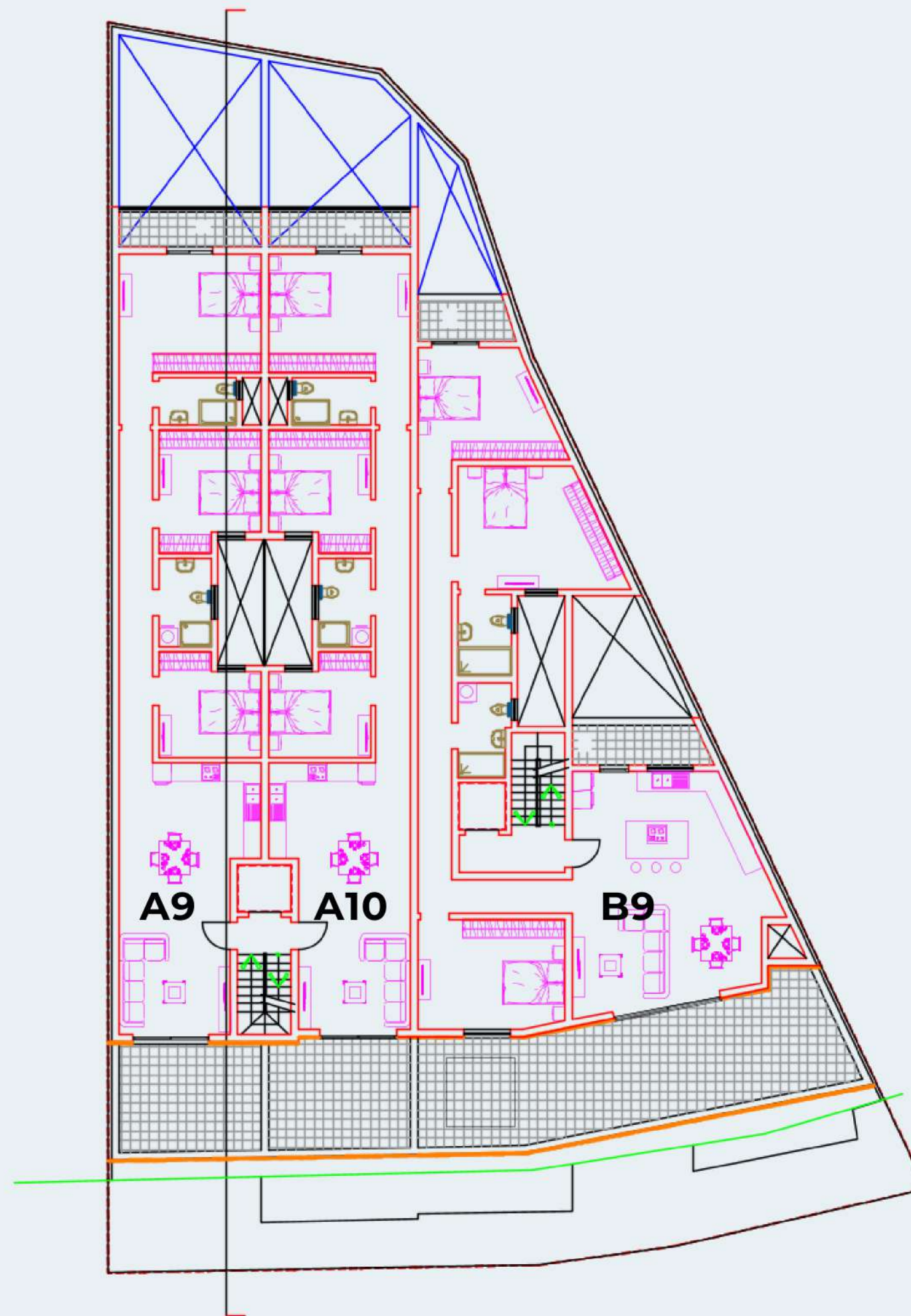
113.25m² Internal / 24.88m² External

PH A10 / 3 Bedroom / €425,000

109.63m² Internal / 24.54m² External

PH B9 / 3 Bedroom / SOLD

142.07m² Internal / 66.95m² External

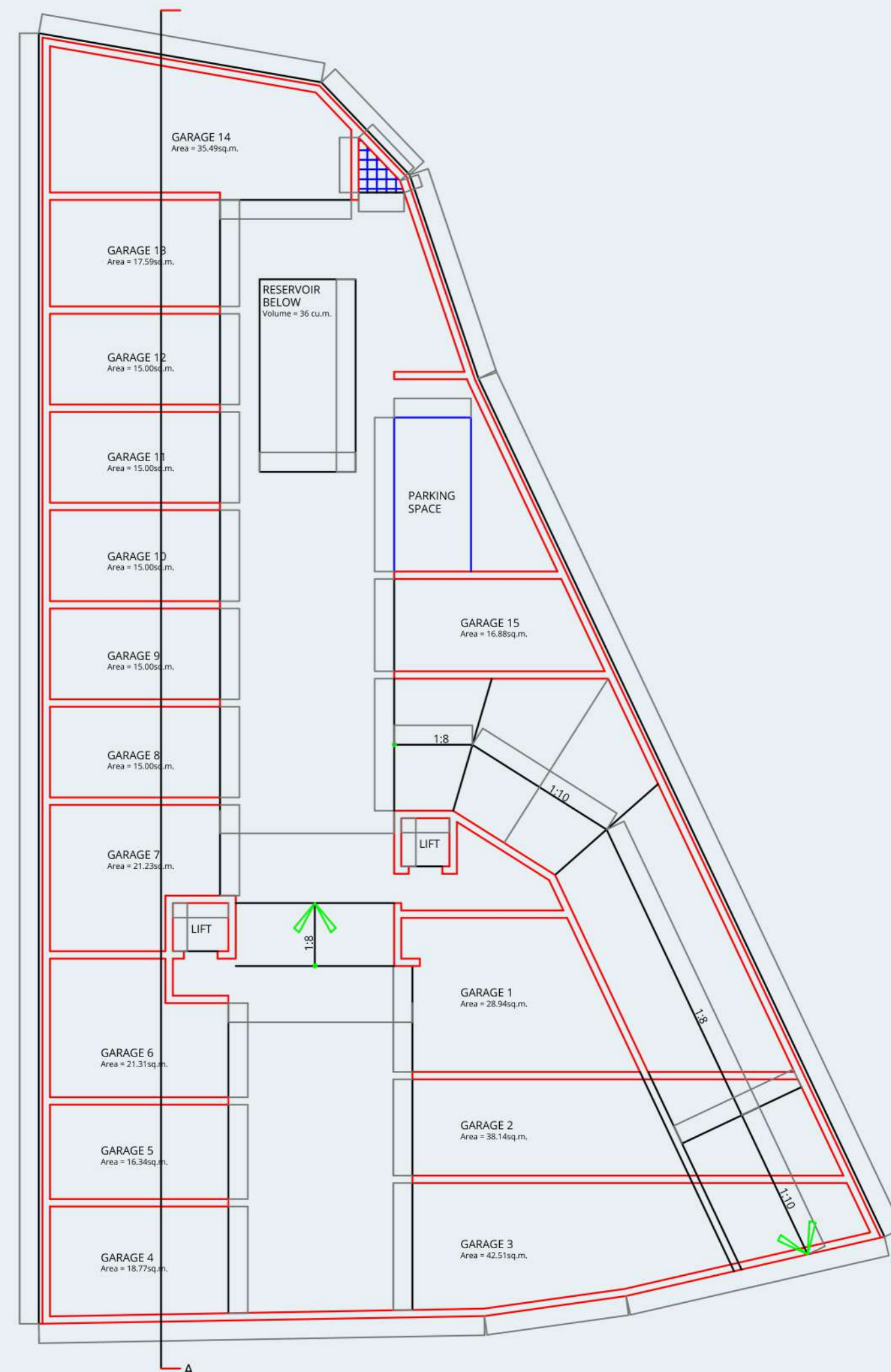




THE GARAGES.

Garages starting from €30,000

We have a number of stores, garages and spaces available at competitive prices. Please get in touch with us directly for a list of currently available spaces.



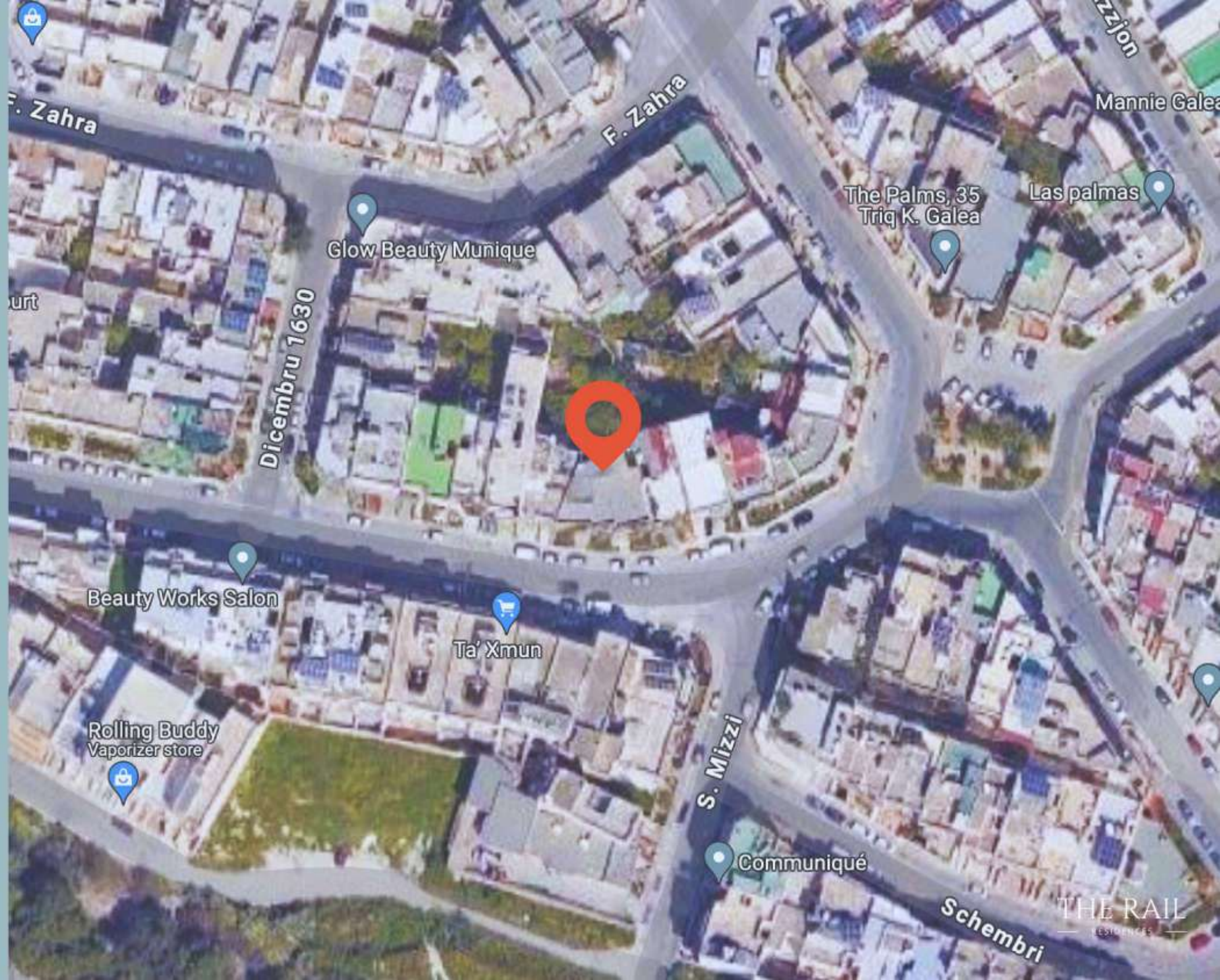


ACMUS

THE LOCATION.

Set in the heart of Birkirkara's Old Church Area, The Rail offers a prime location that immerses you in the historical charm of this revered locale. Nestled within this vibrant district, The Rail provides immediate access to local amenities, quaint cafes, and essential conveniences, all just a stone's throw away.

This sought-after address offers a lifestyle that harmonizes historic charm with modern convenience. Whether it's exploring the rich cultural tapestry of the town, indulging in local delicacies, or accessing everyday necessities, The Rail's location embodies the essence of convenience and cultural richness within Birkirkara. Enjoy the allure of this historic setting while seamlessly blending ease and style in your day-to-day life.



THE RAIL
RESIDENCES



ELTON DEGUARA

S A L E S M A N A G E R

Your dream home awaits at The Rail. For a personal consultation and to learn more about our fantastic properties, please get in touch with our Sales Manager, Elton Deguara. Elton will be delighted to discuss your future at The Rail, answering any questions and guiding you through selecting your perfect residence. Contact us today to start the conversation and take the first step towards your new chapter.

One step further.

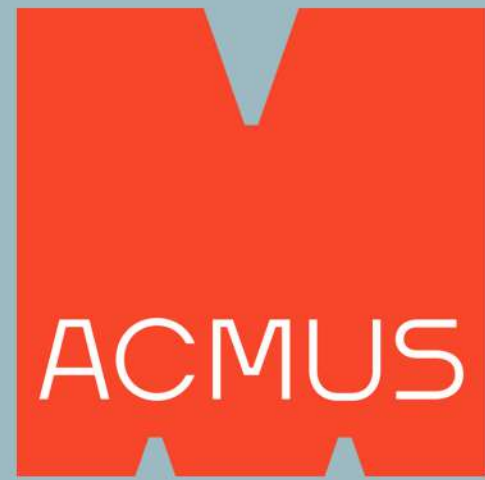
Elton Deguara

Sales Manager

elton.deguara@acmus.mt

+356 9943 7977

The Ona Group Offices, 13 Lourdes Lane, St. Julians STJ 3311, Malta



THANK YOU.

Thank you for your interest in The Rail. We look forward to helping you discover the perfect home in the heart of Birkirkara.